

Maximise tyre life *minimise waste*

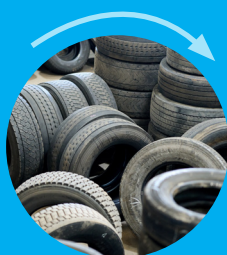


DTM's operational strategy uses a combination of insight from fleet tyre data, alongside proactive maintenance, to minimise the number of tyres changed and ensure that 100% of truck tyres are recycled or re-used. This is a market-leading approach and is a commitment from DTM to lead a transformation of our industry's practices, and to reduce the negative environmental impact.

Proactive tyre maintenance is a major contributor to this strategy, and here we look at the benefits of this proactivity, and in particular to the advantages of retreading.



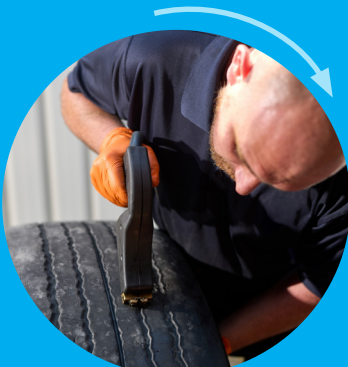
Fleet tyre lifecycle *with DTM*



The UK generates c 50 million waste tyres (700,000 tonnes) each year. Through proactive tyre management we can help to reduce this environmental impact



Daily driver checks and DTM's Fleet Audit inspections identify tyre wear and damage before a tyre becomes unrepairable



Proactive tyre maintenance, including retreading and regrooving, prolongs tyre life where possible. Ensuring that an otherwise good quality tyre meets its full value



Repaired tyres are put into customers' part worn stock, ready to be re-used when needed



End of life truck tyres are recycled or repurposed to create an array of new products such as: athletic tracks; playgrounds; equestrian arenas and manhole covers

Optimised tyre performance lowers fuel costs, increases vehicle safety and reduces a fleet's carbon footprint by using less tyres

Retreading, *the benefits*

When a fleet's truck, bus or trailer tyre is identified as being suitable for retreading, DTM can arrange for specialist retreading to be carried out, to extend the life of an otherwise valuable and structurally sound tyre.

Most good quality modern tyres are designed to be retreaded at least two or three times. Retreading uses less rubber than for a whole new tyre, and reduces use of other raw materials, and therefore is more cost efficient and reduces the environmental impact that would be seen with a replacement tyre.



According to the British Tyre Manufacturers Association (BTMA), the benefits are clear:

Environmental Benefits*

Using retreaded truck & bus tyres delivers **3 x the resource efficiency** and consumes **4 x fewer tyres** than using low-cost single-life tyres.

85% of the used tyre is re-used in a retread, greatly increasing resource productivity and improving supply resilience. Each time a truck & bus tyre is retreaded **30kg of rubber**, up to **20kg of steel** and **60 kg of CO₂** are saved. Many premium quality truck tyres can be retreaded more than once, offering a **total life expectancy of over 375,000 miles** - 15 times round the world.

Economic Benefits*

Retreaded truck & bus tyres offer similar or better performance than the original tyre at the same overall cost per mile as low-cost single-life tyres.

Over 80% of retreaded truck & bus tyre used in the UK are made in the UK. Directly and indirectly, **the sector supports over 5,500 UK jobs**, many in deprived areas of the country. The retreading of truck & bus tyres **contributes £230 million to the UK economy every year**.

* Source: BTMA btmauk.com/retreading/.

Our tips for tyre efficiency

- Tyre life can be optimised through encouraging good driving practices - speak to DTM about our Tool Box Talks driver training sessions to help your drivers improve their driving techniques
- Speak to DTM about Fleet Audit Inspections
- Visit <https://btmauk.com/policy-positions/truck-tyre-retreading/> for industry guidelines on the benefits of retreading
- Find out what the top four manufacturers say about fleets' potential cost reductions of using their advanced retread solutions, designed for multiple retreads (Market share according to Tyrepress 2021 data: 15% Michelin, 15% Bridgestone, 10% Goodyear, 8% Continental)
- Retreading should only be performed by specialists, adhering to strict guidelines (UN ECE regulation 109), on suitable tyre

